

HOW THIS PROPOSAL IMPROVES THE FACILITY:

The increased floor space will allow for various activities simultaneously. This separation from the ground floor will also enable the canoe club to heat this upper floor so that it can be used all year round. The upper floor is organized around a central core into which the doors fold and exercise machines stored. The proposal allows for the areas to be combined in different ways to increase versatility while insuring a good level of sound proofing between zones. The vacuum lift and secondary entrance will provide disabled access presently lacking.

COMMUNITY INVOLVEMENT:

- Improved facilities will give the young people another venue and place to meet and participate in sporting activity.
- The new upstairs area will also be used to offer parents and spectators a refuge from bad weather and a coffee stop.
- The enlarged area will also allow the club to host races and indoor kayaking competitions with local clubs.
- The facility could be available for other community users for at least 24hrs a week.
- We will act as a council community building and be open for local groups such as nurseries, scouts and guides.

NEED

- satisfy the needs identified in the Bath and NE Somerset (BANES) Sport and Leisure Team's 'Get Active strategy for: 'a solid infrastructure - to increase access to local community facilities'.
- We need more space for more people to undertake more sporting activity that will help with achieving SE targets for participation in sport.
- e open for local groups such as nurseries, scouts and guides.



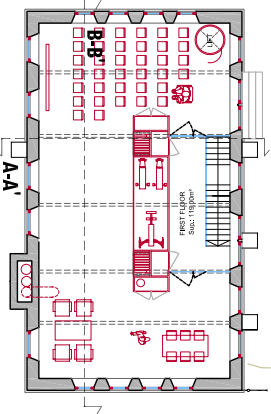
SUSTAINABILITY:

- Bath Canoe Club is already well established with a membership of 240 and is seeking to increase its membership and levels of participation.
- The fitting of a solar heat box to the roof will allow the use of warm air for heating.
- This work will provide insurance and assurance to our members and the community that we are developing the club for the future and for it to exist in the long term.
- we are committed to the future of paddlesport in Bath and we are a viable investment opportunity for sponsors and donors.

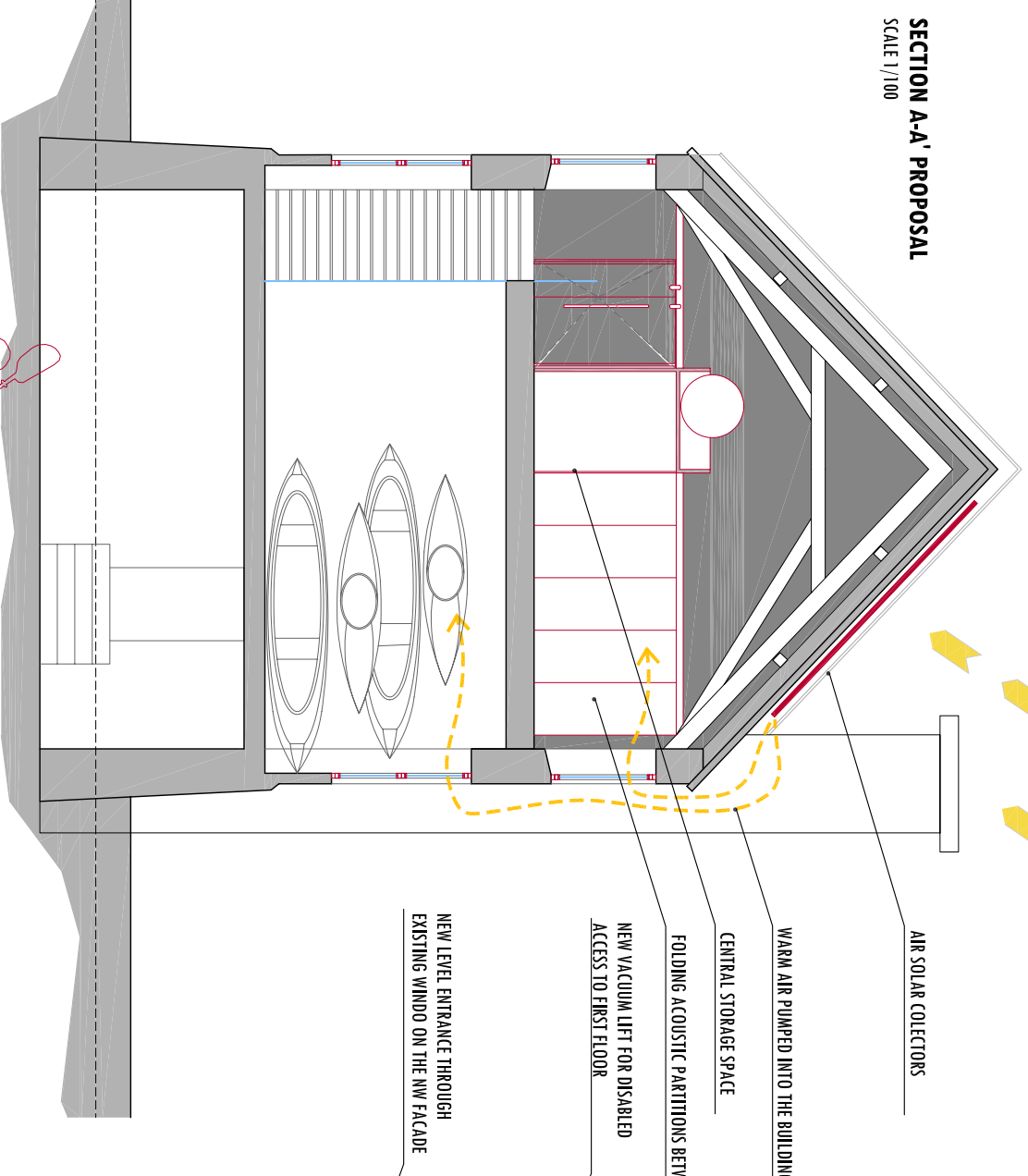


SIMPLE AIR TO AIR SOLAR COLLECTORS MOUNTED ON SOUTH SIDE OF THE EXISTING PITCHED ROOF WILL PROVIDE BACKGROUND HEATING FOR THE RECREATIONAL AREAS AND WARM AIR TO VENTILATE STORAGE AREAS WHERE EQUIPMENT MAY BE DAMP

KEY TO SECTIONS

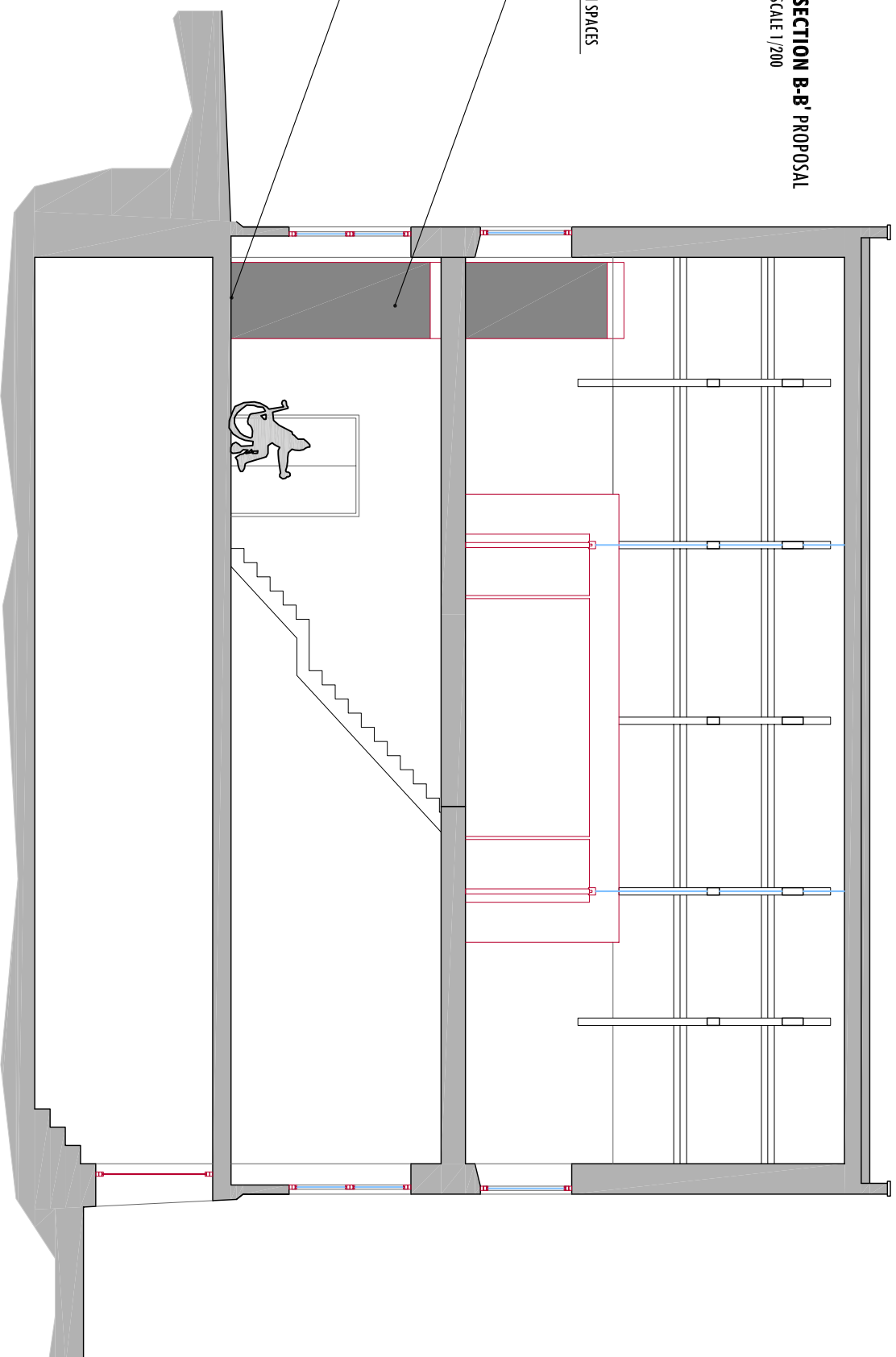


SECTION A-A' PROPOSAL
SCALE 1/100



- AIR SOLAR COLLECTORS
- WARM AIR PUMPED INTO THE BUILDING
- CENTRAL STORAGE SPACE
- FOLDING ACOUSTIC PARTITIONS BETWEEN SPACES
- NEW VACUUM LIFT FOR DISABLED ACCESS TO FIRST FLOOR
- NEW LEVEL ENTRANCE THROUGH EXISTING WINDOW ON THE NW FACADE

SECTION B-B' PROPOSAL
SCALE 1/200



Improving Facilities at Bath Canoe Club